

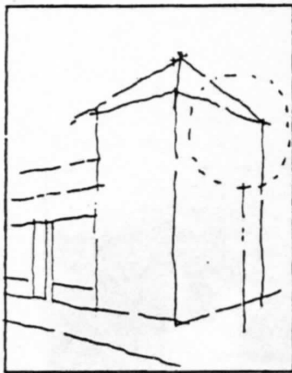
# How to Draw

The following are a few techniques for drawing buildings and landscape:

**1. First** find a view that you like and sit facing it.

**2. Then** hold your paper up in front of you and cover the part of the building you want to draw. Notice how much of the building and landscape the paper hides from your view. That is the area that you can draw on your paper. If you bring the paper closer to your face the proportion of the area you can draw becomes bigger and if you move it away from your face the area gets smaller.

**3. "Block out"** the various parts of the building into the basic geometry - squares, lines, circles and draw lightly so that you can draw over your lines to adjust the relationships until you think it looks right and begin to darken in areas and add details. You are on your way!



light block out



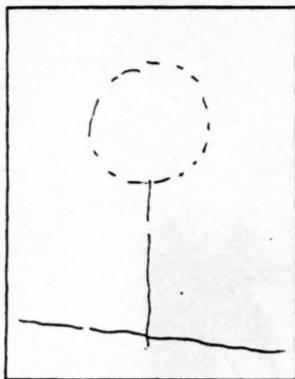
darken shape



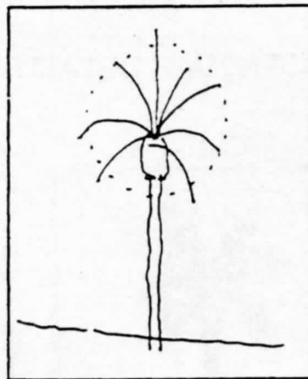
shadows & details



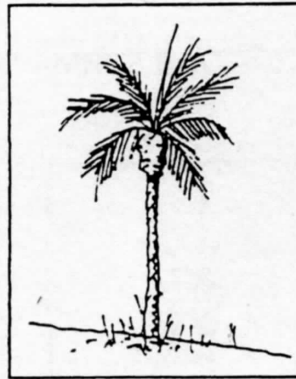
finishing touches



light block out



branches



leaves



darken & finish

